

AUTOMATIC GARMENT & CLIPPING SORTING

ECOCLIP

Precision Categorization for Enhanced Textile
and Fashion Circularity

PICVISA



We can sort it out.

www.picvisa.com

Certified

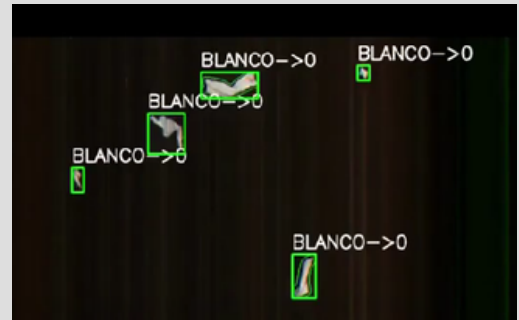
Corporation

ECOCLIP

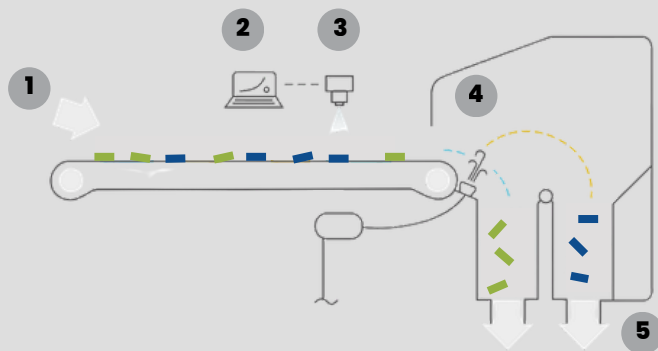
The real revolution of the textile industry

We make textile and fashion circularity possible granting proper and accurate clippings automatic sorting in textile recycling centers worldwide.

- Sorting of textile based on fiber compositions and colors
- Quality control of pre-sorted fractions
- Hard points detection and automatic sorting
- Metal detection
- 100% surface analysis
- clipping textile size starting from 25mm
- 2.5 tons/hour



Operation scheme:



The materials are deposited on the feeder conveyor [1], when passing through the lightning area the materials reflect the light [3] and one or more cameras capture the spectra and/or images [3]. Once the software and hardware of the processing phase [2] determine that an object at the precise moment it passes over the ejection nozzles are activated [4]. The target product [5] is separated from the main flow.



Fiber sorting

Surface detection of pure fibers and blends of fibers



Color sorting

Wide color chart detection including different shades of each color and dark colors (royal navy, black etc)



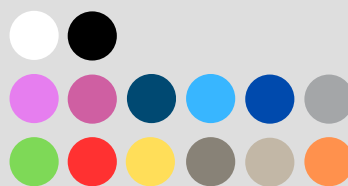
Hard points sorting

Detection of clippings with buttons, zippers, seams and metal pieces

Composition

Cotton	Polyamide
Cotton-Polyester	Acetate
Polyester	Pu
Wool	Silk
Wool - Pa/Po	Others
Acrylic	

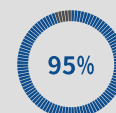
Colors



and more

Hard Points

Trims	Metal Pieces
Zippers	Bottoms
Seams	

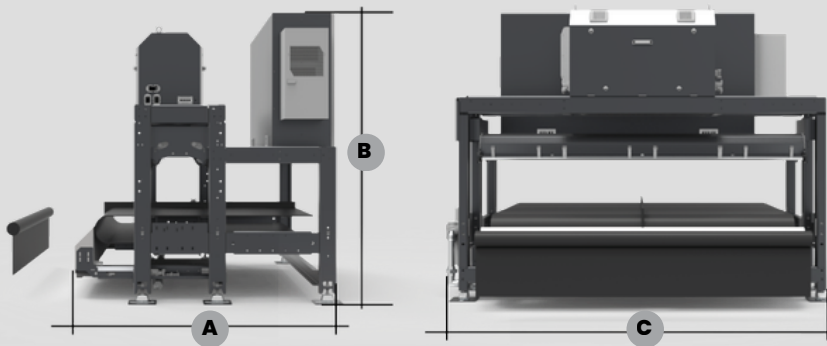


Accuracy on target recognition material

Applications and technologies used:

APPLICATION		TECHNOLOGY			
		NIR	VIS	EM	IA
Color sorting	sorting by color		X		X
Fiber sorting	sorting by fiber (or blend of fibers)	X			X
Color & Fiber sorting	sorting by color and fiber combined	X	X		X
Hard points sorting	trims, buttons, zippers, etc. sorting	X	X	X	X
Textile defect sorting	textile defects detection & sorting	X	X		X
Garment Sorting	whole pieces sorting	X	X		X
Combination of the above application		X	X	X	X

General figures:

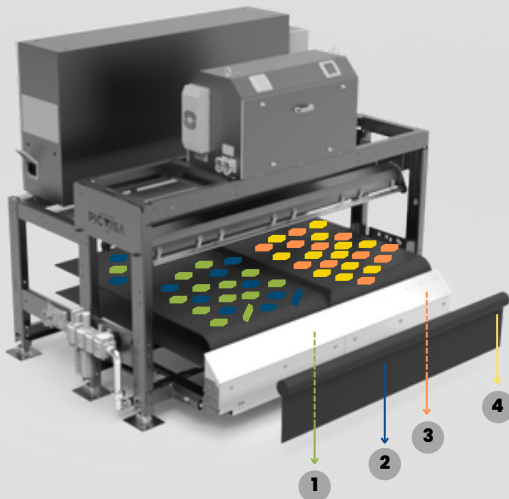


Data Sheet	
EP 2000	
Width	2.000 mm
A	1.923 mm
B	2.110 mm
C	2.660 mm
Air Consumption	4.000/8.000 lpm

*

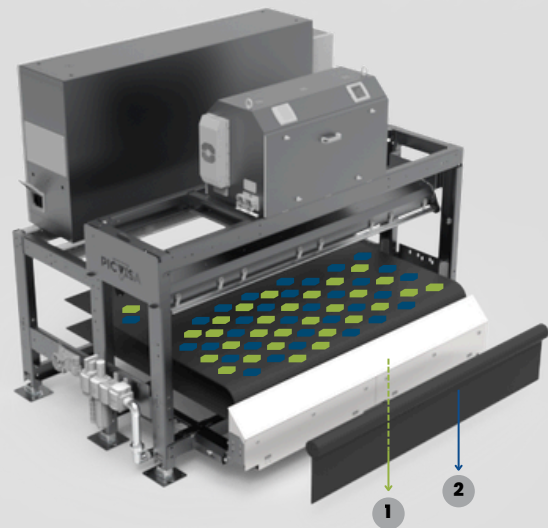
* Other sizes available

Available configuration:



Fiber &/or Color sorting

Color sorting
Throughput ~2,5 tn/h
2-5 Outputs
NIR / VIS



Hard points sorting

Hard points sorting
Throughput ~2,5 tn/h
2 Outputs
NIR / VIS / AI / EM

Design and manufacture of sensor-based sorting equipment incorporating vision and artificial intelligence technologies.



Carrer de Fructuós Gelabert, 6, 7º, 08970
Sant Joan Despí, Barcelona, Spain

+34 938 268 822
info@picvisa.com

www.picvisa.com